

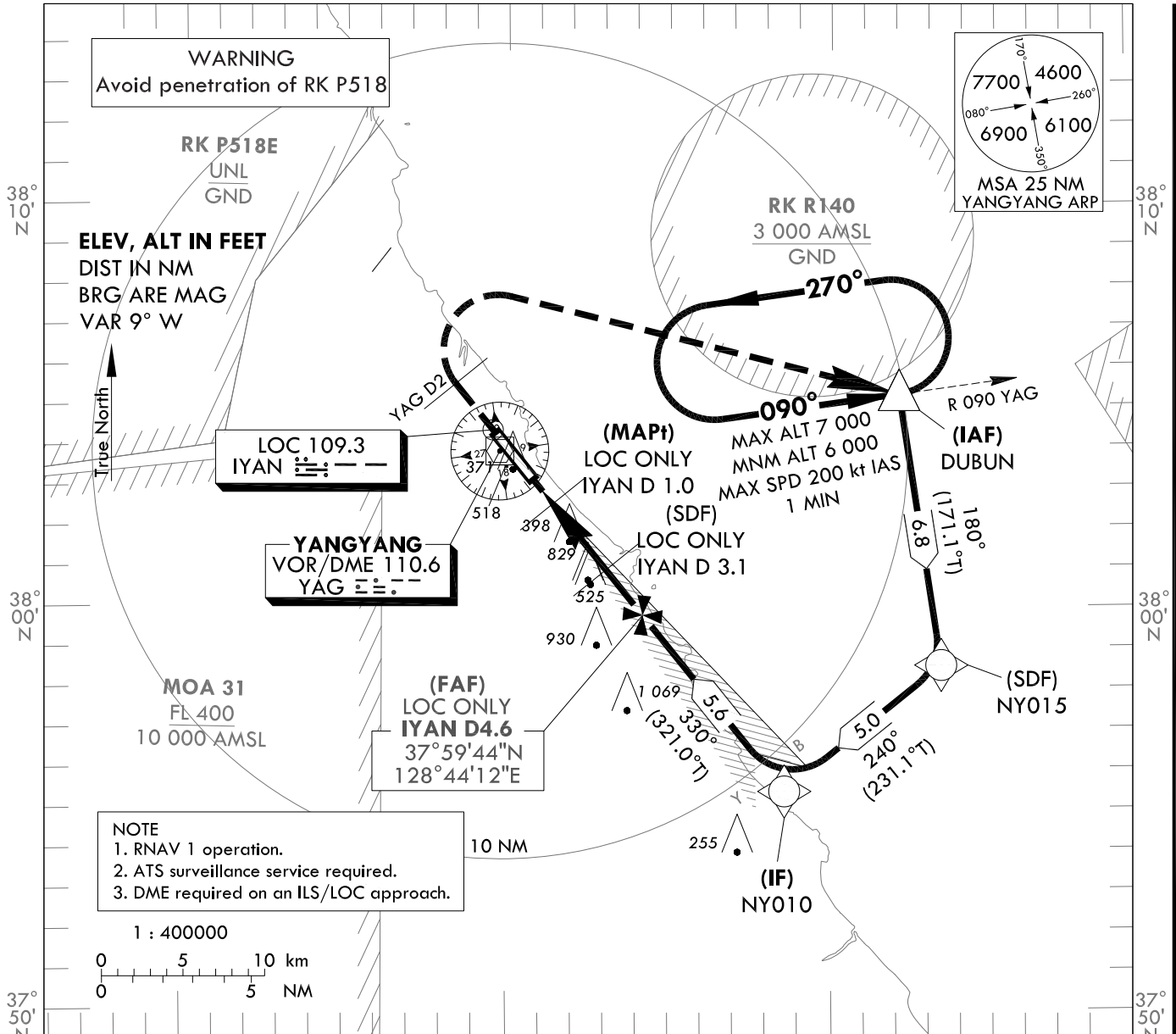
**INSTRUMENT
APPROACH
CHART - ICAO**

AERODROME ELEV 241 ft
HEIGHTS RELATED TO
THR RWY 33 - ELEV 227 ft

GANGNEUNG APP 124.6
YANGYANG TWR 118.85
124.375

**YANGYANG/Intl(RKNY)
ILS Z or LOC Z RWY 33**

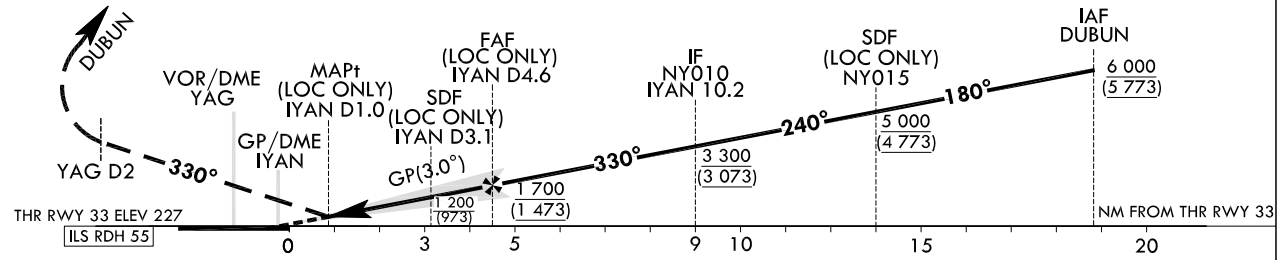
Note : Approach and circle-to-land under ICAO Flight Procedures.



RECOMMENDED PROFILE(LOC ONLY)	DME YAG	4	3	2
Final Approach Gradient 5.68%(344.8 ft/NM) to SDF, 5.12%(311.2 ft/NM) to THR.	ALT(HGT)	1 526 (1 300)	1 203 (976)	879 (653)

TRANSITION ALT 14 000
TRANSITION LVL FL 140

MISSED APPROACH
Climb straight ahead until YAG D2, then turn right direct to DUBUN and hold at 6 000 ft. Hold as published.



CATEGORY	DA(H)/MDA(H)	A	B	C	D	Rate of descent					
						V/V fpm	60	90	120	150	180
STA	CAT 1	FULL	RVR 550 m, VIS 800 m				318	478	637	796	955
		ALS INOP	1 200 m								
	LOC	FULL	1 500 m								
		ALS INOP	2 200 m								
Circling		700 (460) 2 100 m	740 (500) 2 800 m	1 160 (920) 4 300 m	1 180 (940) 4 600 m						

Change : Information of instrument approach procedure for RWY 33.

YANGYANG/Intl(RKNY)
ILS Z or LOC Z RWY 33

AERONAUTICAL DATA TABULATION

ILS/LOC Z Approach to RWY 33 from DUBUN		
	Fix/Point	Coordinates
DUBUN(IAF)		38°05'14.5"N 128°52'13.8"E
NY015(SDF)	BRG 239.02°	37°58'31.2"N 128°53'33.6"E
NY010(IF)	BRG 329.01° / 10.15 NM IYAN	37°55'22.3"N 128°48'38.8"E
D4.6 IYAN(FAF LOC ONLY)	BRG 329.52° / 4.55 NM IYAN	37°59'44.0"N 128°44'11.6"E
D3.1 IYAN(SDF LOC ONLY)	BRG 329.52° / 3.10 NM IYAN	38°00'49.2"N 128°43'04.7"E
D1.0 IYAN(MAPt LOC ONLY)	BRG 329.52° / 1.00 NM IYAN	38°02'29.7"N 128°41'22.0"E
THR RWY 33		38°03'09.21"N 128°40'41.25"E
IYAN DME		38°03'13.8"N 128°40'30.0"E
D2 YAG	R 330 YAG/ 2.00 NM YAG	38°05'28.5"N 128°38'18.4"E
DUBUN	R 090 YAG/ 10.00 NM YAG	38°05'14.5"N 128°52'13.8"E

Change : Information of instrument approach procedure for RWY 33.

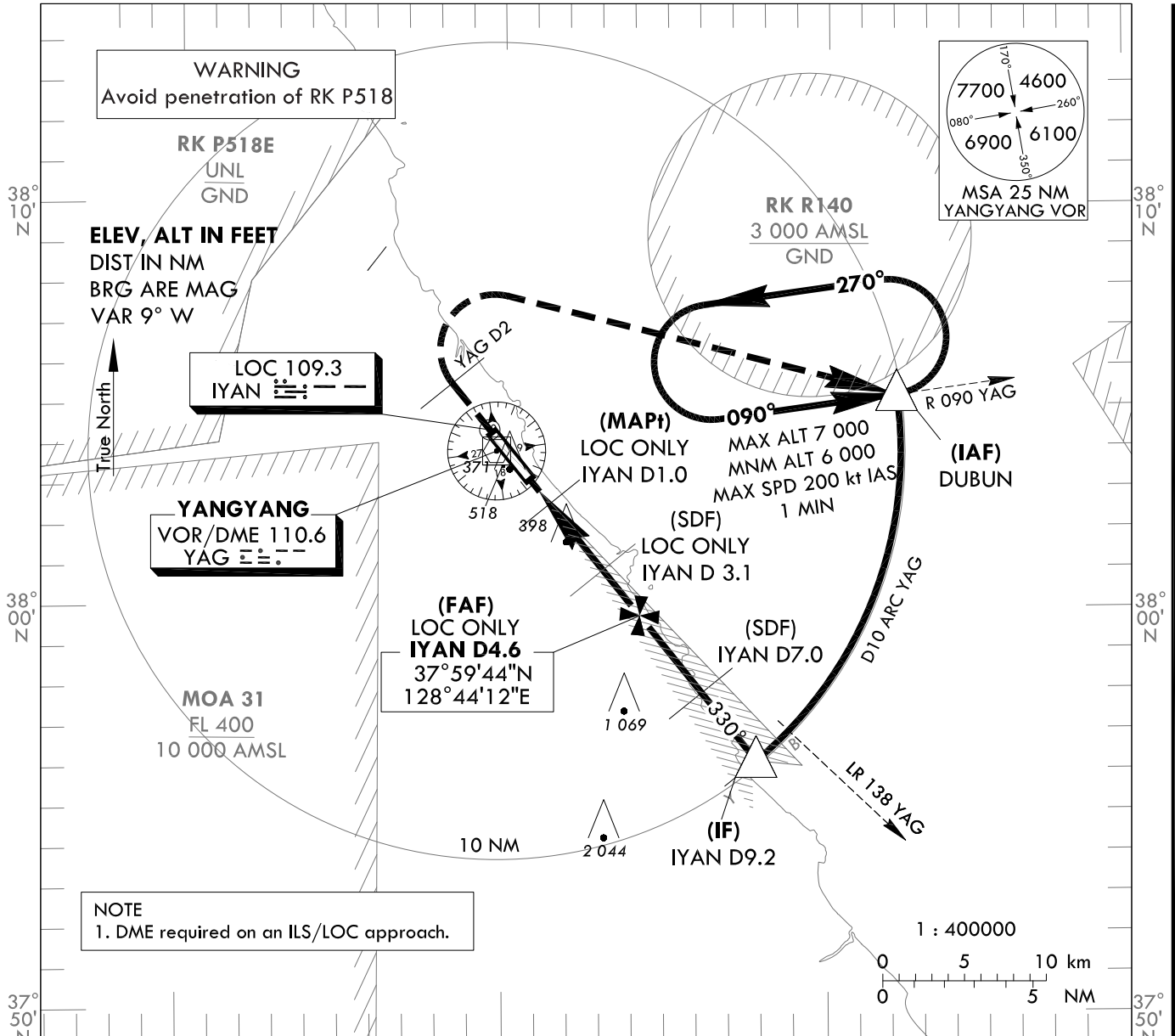
**INSTRUMENT
APPROACH
CHART - ICAO**

AERODROME ELEV 241 ft
HEIGHTS RELATED TO
THR RWY 33 - ELEV 227 ft

GANGNEUNG APP 124.6
YANGYANG TWR 118.85
124.375

**YANGYANG/Intl(RKNY)
ILS Y or LOC Y RWY 33**

Note : Approach and circle-to-land under ICAO Flight Procedures.

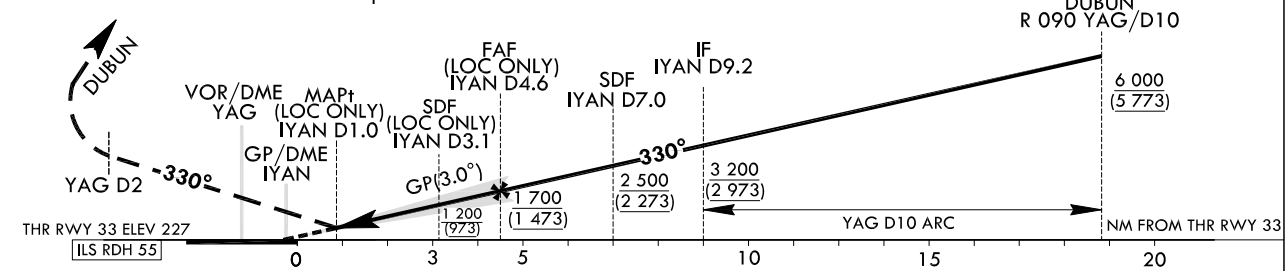


NOTE
1. DME required on an ILS/LOC approach.

RECOMMENDED PROFILE(LOC ONLY)	DME YAG	4	3	2
Final Approach Gradient 5.32%, 324 ft/NM	ALT(HGT)	1 526 (1 300)	1 203 (976)	879 (653)

TRANSITION ALT 14 000
TRANSITION LVL FL 140

MISSED APPROACH
Climb straight ahead until YAG D2, then turn right to DUBUN and hold at 6 000 ft. Hold as published.



CATEGORY	DA(H)/MDA(H)	A	B	C	D	Rate of descent V/V fpm	Knots					
							60	90	120	150	180	
STA	CAT 1	FULL	RVR 550 m, VIS 800 m				* Timing Not authorized for defining MAPt. * Circling Not authorized west of RWY 15-33, area on between R 150 and R 315 YAG and area beyond 6 DME of between R 315 and R 360 YAG.	318	478	637	796	955
		ALS INOP	427 (200)	1 200 m	1 500 m	2 200 m						
	LOC	FULL	700 (473)	700 (460) 2 100 m	740 (500) 2 800 m	1 160 (920) 4 300 m		1 180 (940) 4 600 m				
		ALS INOP										
Circling												

Change : Information of instrument approach procedure for RWY 33.

YANGYANG/Intl(RKNY)
ILS Y or LOC Y RWY 33

AERONAUTICAL DATA TABULATION

ILS/LOC Y Approach to RWY 33 from DUBUN		
	Fix/Point	Coordinates
	DUBUN(IAF)	38°05'14.5"N 128°52'13.8"E
	D9.2 IYAN(IF) BRG 329.54° / 9.16 NM IYAN	37°56'08.9"N 128°47'51.2"E
	D7.0 IYAN(SDF) BRG 329.54° / 7.00 NM IYAN	37°57'49.6"N 128°46'08.4"E
	D4.6 IYAN(FAF LOC ONLY) BRG 329.54° / 4.55 NM IYAN	37°59'44.0"N 128°44'11.6"E
	D3.1 IYAN(SDF LOC ONLY) BRG 329.52° / 3.10 NM IYAN	38°00'49.2"N 128°43'04.7"E
	D1.0 IYAN(MAPt LOC ONLY) BRG 329.54° / 1.00 NM IYAN	38°02'29.7"N 128°41'22.0"E
	THR RWY 33	38°03'09.21"N 128°40'41.25"E
	IYAN DME	38°03'13.8"N 128°40'30.0"E
	D2 YAG R 330 YAG/ 2.00 NM YAG	38°05'28.5"N 128°38'18.4"E
	DUBUN R 090 YAG/ 10.00 NM YAG	38°05'14.5"N 128°52'13.8"E

Change : Information of instrument approach procedure for RWY 33.

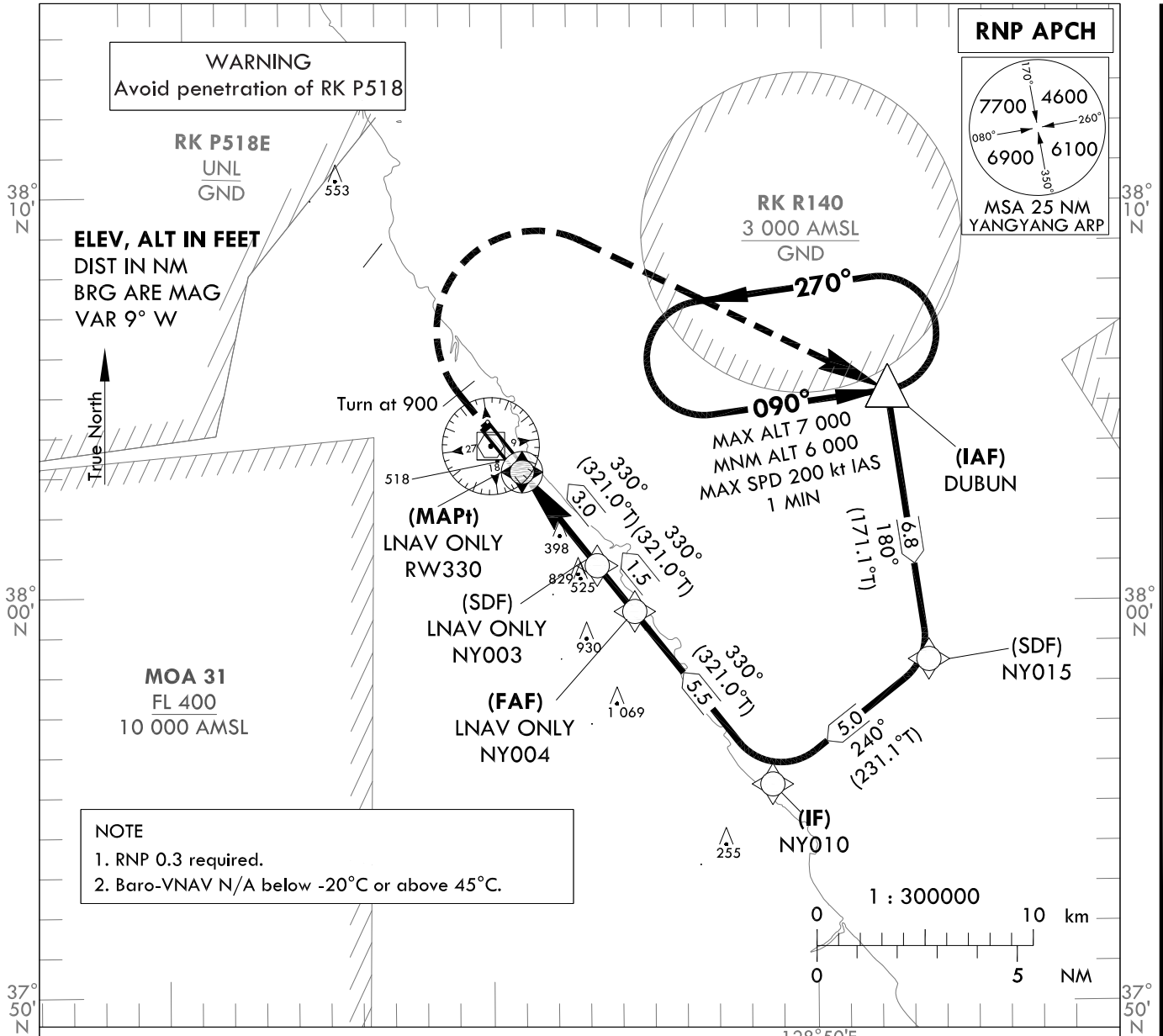
**INSTRUMENT
APPROACH
CHART - ICAO**

AERODROME ELEV 241 ft
HEIGHTS RELATED TO
THR RWY 33 - ELEV 227 ft

GANGNEUNG APP 124.6
YANGYANG TWR 118.85
124.375

**YANGYANG/Intl(RKNY)
RNP RWY 33**

Note : Approach and circle-to-land under ICAO Flight Procedures.

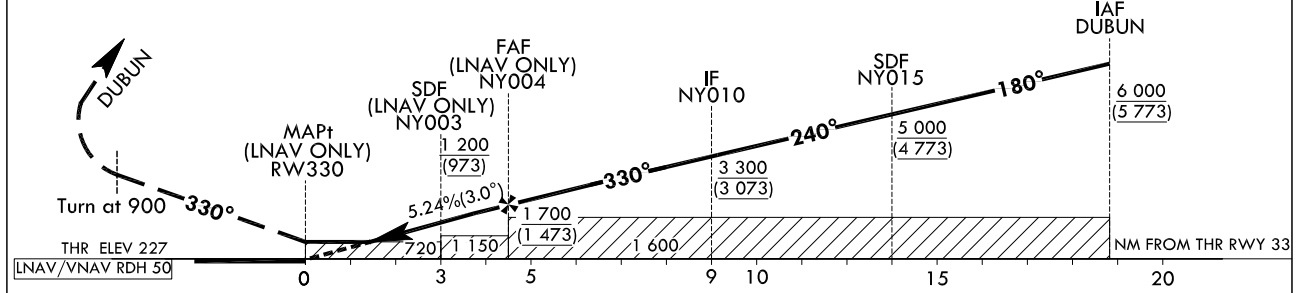


NOTE
1. RNP 0.3 required.
2. Baro-VNAV N/A below -20°C or above 45°C.

MISSED APPROACH

Climb on HDG 329° to 900 ft,
then turn right to DUBUN and hold at 6 000 ft.
Hold as published.

TRANSITION ALT 14 000
TRANSITION LVL FL 140



CATEGORY		MDA(H)/DA(H)	A	B	C	D	Rate of descent					
							V/V fpm					
STA	LNAV	FULL	720	1 500 m			318	478	637	796	955	* Timing Not authorized for defining MAPt. * Circling Not authorized west of RWY 15-33, area on between R 150 and R 315 YAG and area beyond 6 DME of between R 315 and R 360 YAG.
		ALS INOP	(493)	2 300 m								
	LNAV/VNAV	FULL	640	1 200 m								
		ALS INOP	(413)	1 900 m								
Circling			720(480) 2 400 m	740 (500) 2 800 m	1 160 (920) 4 300 m	1 180 (940) 4 600 m						

Change : Information of instrument approach procedure for RWY 33.

YANGYANG/Intl(RKNY)
RNP RWY 33

AERONAUTICAL DATA TABULATION

Instrument Approach Procedure Coding Tables

Serial Number	Path Descriptor	Waypoint Identifier	Fly-over	Course/Track °M(°T)	Distance (NM)	Turn direction	Altitude (ft)	Speed (kt)	Coordinates	VPA/ TCH*	Navigation specification	Remarks
001	IF	DUBUN	-	-	-	-	+6 000	-	38°05'14.5"N 128°52'13.8"E	-	RNP APCH	IAF
002	TF	NY015	-	180(171.1)	6.8	-	+5 000	-	37°58'31.2"N 128°53'33.6"E	-	RNP APCH	SDF
003	TF	NY010	-	240(231.1)	5.0	-	+3 300	-	37°55'22.3"N 128°48'38.8"E	-	RNP APCH	IF
004	TF	NY004	-	330(321.0)	5.5	-	+1 700	-	37°59'40.6"N 128°44'14.9"E	-	RNP APCH	FAF
005	TF	NY003	-	330(321.0)	1.5	-	+1 200	-	38°00'49.2"N 128°43'04.7"E	-	RNP APCH	SDF
006	TF	RW330	Y	330(321.0)	3.0	-	+720	-	38°03'09.21"N 128°40'41.25"E	-3.00/50	RNP APCH	MAPt
007	VA	ALT	Y	330(321.0)	-	-	+900	-	-	-	RNP APCH	-
008	DF	DUBUN	Y	-	-	-	@6 000	-200	38°05'14.5"N 128°52'13.8"E	-	RNP APCH	MAHF

RNP RWY 33 - via DUBUN(IAF)

Holding Identification	Path Descriptor	Waypoint Identifier	Fly-over	Course/Track °M(°T)	Turn direction	Altitude (ft)	Speed (kt)	Coordinates	VPA/ TCH*	Navigation specification	Remarks
RNP RWY 33	HM	DUBUN	Y	090(081.4)	L	-7 000 +6 000	-200	38°05'14.5"N 128°52'13.8"E	-	RNAV 1	1 Min (Outbound Leg)

HOLDING PROCEDURE

* The term TCH equates to the use of the term RDH, within this context of the FAS data block.

Change : Information of instrument approach procedure for RWY 33.

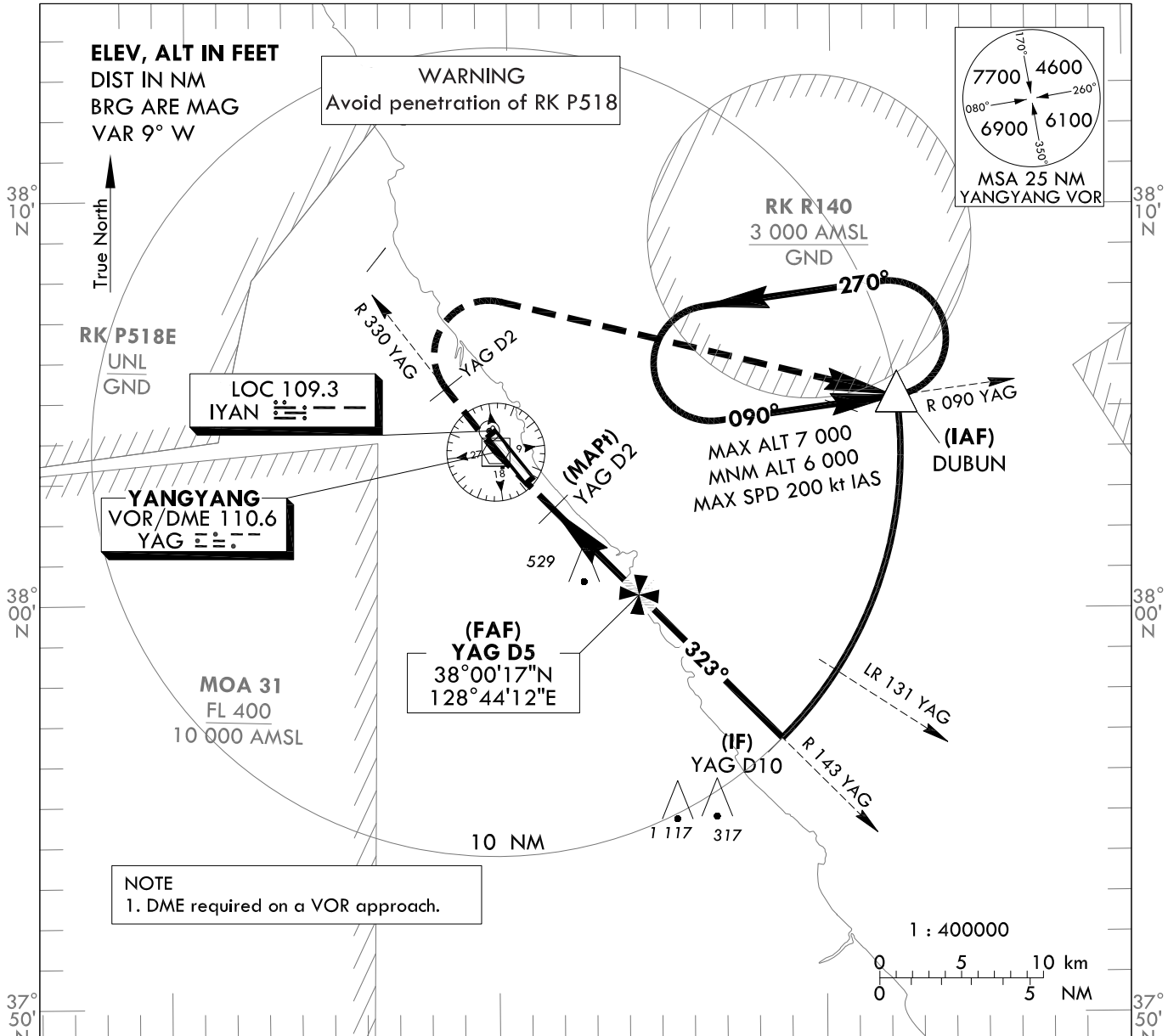
**INSTRUMENT
APPROACH
CHART - ICAO**

AERODROME ELEV 241 ft
HEIGHTS RELATED TO
THR RWY 33 - ELEV 227 ft

GANGNEUNG APP 124.6
YANGYANG TWR 118.85
124.375

**YANGYANG/Intl(RKNY)
VOR RWY 33**

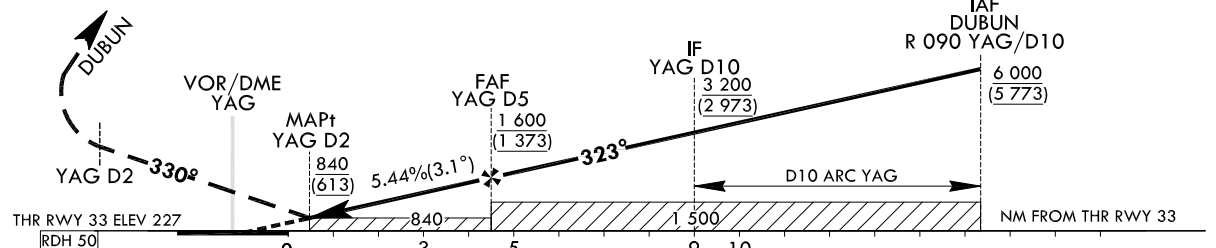
Note : Approach and circle-to-land under ICAO Flight Procedures.



RECOMMENDED PROFILE(LOC ONLY)	DME YAG	5	4	3	2
Final Approach Gradient 5.44%, 330 ft/NM	ALT(HGT)	1 600 (1 373)	1 268 (1 043)	940 (713)	840 (613)

TRANSITION ALT 14 000
TRANSITION LVL FL 140

MISSED APPROACH
Climb on R 330 YAG until 2 DME, then turn right to DUBUN and hold at 6 000 ft. Hold as published.



Rate of descent	Knots				
	60	90	120	150	180
V/V fpm	330	496	661	826	991

CATEGORY	FULL	MDA(H)	A	B	C	D
			STA	ALS INOP	840 (613)	2 100 m
Circling			2 800 m			
			840 (600) 2 700 m	840 (600) 2 800 m	1 160 (920) 4 300 m	1 180 (940) 4 600 m

* Timing Not authorized for defining MAPt.
* Circling Not authorized west of RWY 15-33, area on between R 150 and R 315 YAG and area beyond 6 DME of between R 315 and R 360 YAG.

Change : Information of instrument approach procedure for RWY 33.

YANGYANG/Intl(RKNY)
VOR RWY 33

AERONAUTICAL DATA TABULATION

VOR Approach to RWY 33 from DUBUN		
	Fix/Point	Coordinates
	DUBUN(IAF)	38°05'14.5"N 128°52'13.8"E
D10.0 YAG(IF)	BRG 323.25° / 10.00 NM YAG	37°56'45.5"N 128°48'41.3"E
D5.0 YAG(FAF)	BRG 323.25° / 5.00 NM YAG	38°00'16.9"N 128°44'11.7"E
D2.0 YAG(MAPt)	BRG 323.25° / 2.00 NM YAG	38°02'23.5"N 128°41'29.9"E
THR RWY 33	Final Approach Descent Angle 3.11°	38°03'09.21"N 128°40'41.25"E
	YAG VOR/DME	38°03'48.1"N 128°39'41.8"E
D2 YAG	R 330 YAG/ 2.00 NM YAG	38°05'22.3"N 128°38'07.6"E
	DUBUN	R 090 YAG/ 10.00 NM YAG 38°05'14.5"N 128°52'13.8"E

Change : Information of instrument approach procedure for RWY 33.